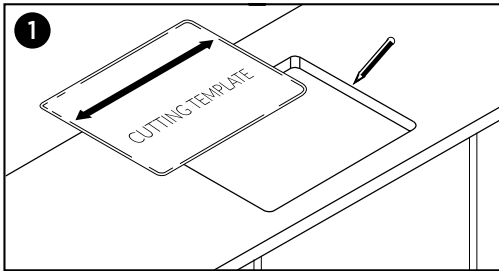
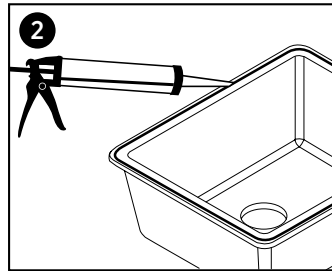


Undercounter basins

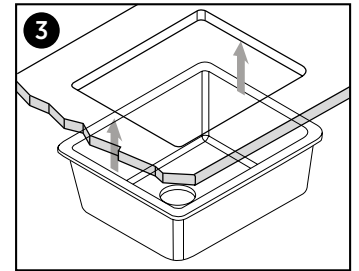
Installation guide



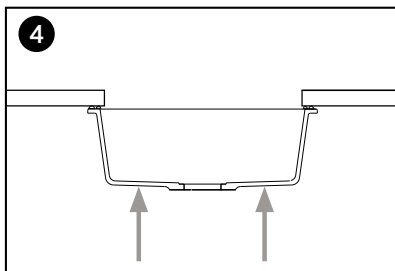
1 Use the cutting template to draw and cut a precise hole in the benchtop. Make allowance for any polishing back that is required after cutting. Finish the hole rim.



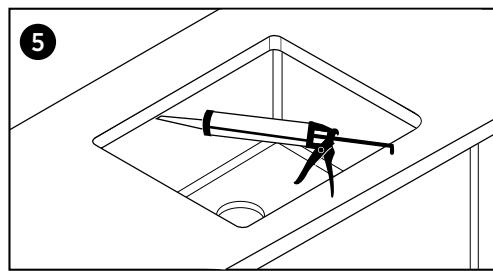
2 Place a neat line of silicone sealant around the basin rim.



3 Carefully locate the basin under the benchtop. The silicone will attach the basin to the benchtop.



4 Support and place upwards pressure on the basin to keep it in place while the silicone is curing.



5 Use silicone to seal the gap between the benchtop and basin. Take care to ensure that the silicone is not visible.

IMPORTANT !

- 1 Inspect the components before installation to ensure there are no visible defects. If a defect is found, do not install the product and contact the supplier immediately. Claims for defects will not be accepted after the product has been installed.
- 2 The basin must be installed by a licensed plumber. Failure to do so may void the warranty.
- 3 Use silicone sealant. DO NOT USE EPOXY TYPE ADHESIVES. The use of epoxy adhesives will void the warranty.

SEIMA

bathroom | kitchen | laundry

seima.com.au

undercounter-basin-in | v 1.0