

Sink accessories

For Argstone sinks and
Tetra, Kubic, Leto and Acero sinks



SEIMA

bathroom | kitchen | laundry

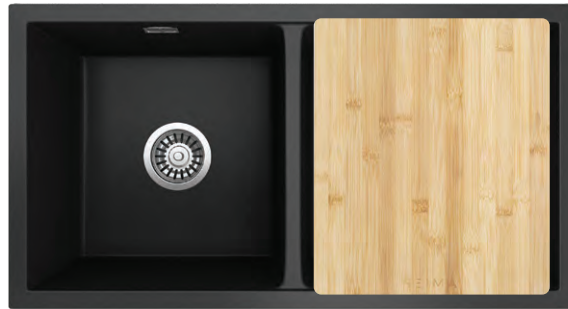
seima.com.au

Please note

- All measurements are in millimetres.
- Always use the actual product to verify cutout.
- Specifications may vary without notice as part of our continuous improvement practices.

Arqstone sink accessories

Accessories for Oros and Rhodes sinks



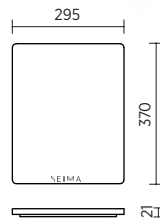
CUTTING BOARD - ARQSTONE SINKS - SMALL

Suits Oros 1162

ORDER CODE **191953**
SIZE 295W x 370 x 21 mm
MATERIAL Bamboo
FITS Arqstone sink - Oros 1162



Fits Oros 1162



CUTTING BOARD - ARQSTONE SINKS - MEDIUM

Suits Oros 550, 620, 750, 820 and 822

ORDER CODE **191954**
SIZE 340W x 405 x 21 mm
MATERIAL Bamboo
FITS Arqstone sinks - Oros 550, 620, 750, 820, 822



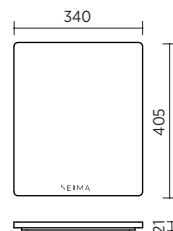
Fits Oros 550 and Oros 750



Fits Oros 820 and Oros 822



Fits Oros 620



SEIMA

bathroom | kitchen | laundry

seima.com.au

Please note

- All measurements are in millimetres.
- Always use the actual product to verify cutout.
- Specifications may vary without notice as part of our continuous improvement practices.

Arqstone sink accessories CONTINUED

Accessories for Oros and Rhodes sinks

CUTTING BOARD - ARQSTONE SINKS - LARGE

Suits Oros 1160 and Rhodes 900

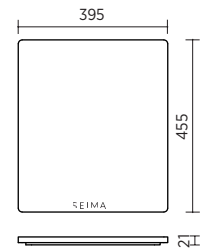
ORDER CODE **191955**
 SIZE 395W x 455 x 21 mm
 MATERIAL Bamboo
 FITS Arqstone sinks - Oros 1160, Rhodes 900



Fits Rhodes 900 butler sink



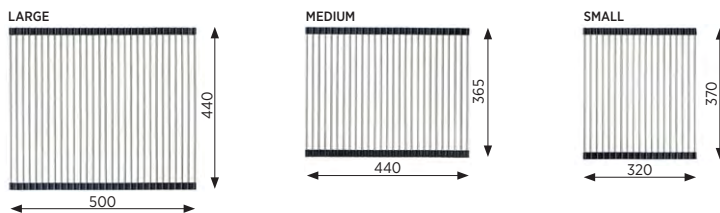
Fits Oros 1160



ROLL-OUT MATS

Suitable for all sinks

ORDER CODE Large 191561 (old code: SKA-015-01)
 Medium 191562 (old code: SKA-015-02)
 Small 191563 (old code: SKA-015-03)
 MATERIAL Stainless steel, rubber



DRAINER BASKET

Suitable for all sinks

ORDER CODE 191560 (old code: SKA-014)
 SIZE 370 x 320 x 150H mm
 MATERIAL Chrome plated metal



SEIMA

bathroom | kitchen | laundry

seima.com.au

Please note

- All measurements are in millimetres.
- Always use the actual product to verify cutout.
- Specifications may vary without notice as part of our continuous improvement practices.

Tetra + Kubic + Leto

Accessories for Tetra, Kubic and Leto sinks

CUTTING BOARD 02

Suits Tetra, Kubic, Kubic AboveMount, Kubic Deep

ORDER CODE 191548 (old code: SKA-001-02)
SIZE 375W x 440 mm
MATERIAL Bamboo
FIT Fits standard size bowl (does not fit half-bowl)

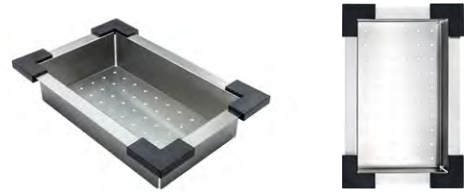


COLANDER

Suits Tetra, Kubic, Kubic AboveMount, Kubic Deep

ORDER CODE 191564 (old code: SKA-016)
SIZE 290 x 450 x 75H mm
MATERIAL Stainless steel, plastic
FIT Fits standard size bowl (does not fit half-bowl)

The colander is especially useful for rinsing leaves and vegetables and draining pasta.



DRAINER TRAY

Suits Tetra, Kubic, Kubic Deep (not suitable for Kubic AboveMount)

ORDER CODE 191565 (old code: SKA-017)
SIZE 380 x 435 x 20H mm
MATERIAL Stainless steel
FIT Fits standard size bowl (except Kubic AboveMount)

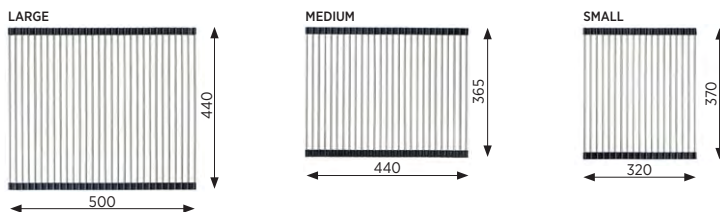
This stainless steel drainer tray can be placed over the bowl to create a level surface that is useful for many purposes.



ROLL-OUT MATS

Suitable for all sinks

ORDER CODE Large 191561 (old code: SKA-015-01)
Medium 191562 (old code: SKA-015-02)
Small 191563 (old code: SKA-015-03)
MATERIAL Stainless steel, rubber



Small roll-out mat fits into the Benchtop Drainer Tray.

BENCHTOP DRAINER TRAY

Suits Tetra, Kubic, Kubic Deep (not suitable for Kubic AboveMount)

ORDER CODE 191566 (old code: SKA-018)
SIZE 440 x 364 x 30H mm
MATERIAL Stainless steel, plastic

The benchtop drainer tray is designed to sit on the benchtop alongside your sink, for draining dishes or defrosting food. The tray has a gentle slope so that liquid drains into the sink. The small size roll-out mat fits the tray. The benchtop drainer tray also fits neatly into the Tetra standard bowl.



DRAINER BASKET

Suitable for all sinks

ORDER CODE 191560 (old code: SKA-014)
SIZE 370 x 320 x 150H mm
MATERIAL Chrome plated metal



SEIMA

bathroom | kitchen | laundry

seima.com.au

Please note

- All measurements are in millimetres.
- Always use the actual product to verify cutout.
- Specifications may vary without notice as part of our continuous improvement practices.

Acero

Accessories for selected Acero sinks

CUTTING BOARD 01

Suits Acero 800, 980, 1080 and 1200 sinks

ORDER CODE 191547 (old code: SKA-001-01)
SIZE 330W x 410 mm
MATERIAL Bamboo
FIT Fits standard size bowl



CUTTING BOARD 03

Suits Acero 002 and 005 sinks

ORDER CODE 191549 (old code: SKA-001-03)
SIZE 360W x 425 mm
MATERIAL Bamboo
FIT Fits standard size bowl



CUTTING BOARD 04

Suits Acero 003 round sink

ORDER CODE 191550 (old code: SKA-001-04)
SIZE 350W x 390 mm
MATERIAL Wood
FIT Fits bowl of Acero 003 round sink



DRAINER BASKET

Suitable for all sinks

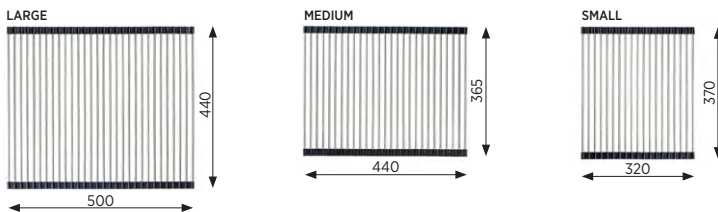
ORDER CODE 191560 (old code: SKA-014)
SIZE 370 x 320 x 150H mm
MATERIAL Chrome plated metal



ROLL-OUT MATS

Suitable for all sinks

ORDER CODE Large 191561 (old code: SKA-015-01)
Medium 191562 (old code: SKA-015-02)
Small 191563 (old code: SKA-015-03)
MATERIAL Stainless steel, rubber



SEIMA

bathroom | kitchen | laundry

seima.com.au

Please note

- All measurements are in millimetres.
- Always use the actual product to verify cutout.
- Specifications may vary without notice as part of our continuous improvement practices.

Wastes

Supplied with all sinks | Available as spare parts

BASKET WASTE — SQUARE

Suits Tetra sinks

Supplied with all Tetra sinks as standard.
Available as a spare part.

ORDER CODE 191558 (old code: SKA-012)
MATERIAL Stainless steel



BASKET WASTE — ROUND

Suits Kubic, Leto, Acero and Eva sinks

Wastes are supplied with all sinks as standard.
Available as a spare part.

ORDER CODE 191554 Round, long, no overflow (old code: SKA-004L)
191555 Round, short, no overflow (old code: SKA-004S)
191557 With round overflow connector (old code: SKA-010)
MATERIAL Stainless steel



SEIMA

bathroom | kitchen | laundry

seima.com.au

Please note

- All measurements are in millimetres.
- Always use the actual product to verify cutout.
- Specifications may vary without notice as part of our continuous improvement practices.